

**7.0% GUARANTEED
LEASEBACK!***



image for illustrative purposes only

THIS DISPLAY IS FOR SALE

Home design:

Emery 250
Felix façade

Address:

Lot 189
(9) Lakeside Drive
Lyndarum Estate
Wollert

Design features & options:

4 bedrooms
2 bathrooms
double garage + workshop
seperate living
alfresco

This Burbank display home includes the following luxurious upgrades:

- Evaporative cooling
- External GPO for sprinkler system
- Colorbond panel lift garage door
- Designer floor coverings
- Rear and side boundary fencing
- Luxury window coverings
- 3 coat paint system
- Internal doors 2340mm
- Designer landscaping
- Exposed aggregate driveway
- Security system included
- Stone benchtops throughout
- 2740mm ceilings

Home design:

Emery 250
Felix façade

Address:

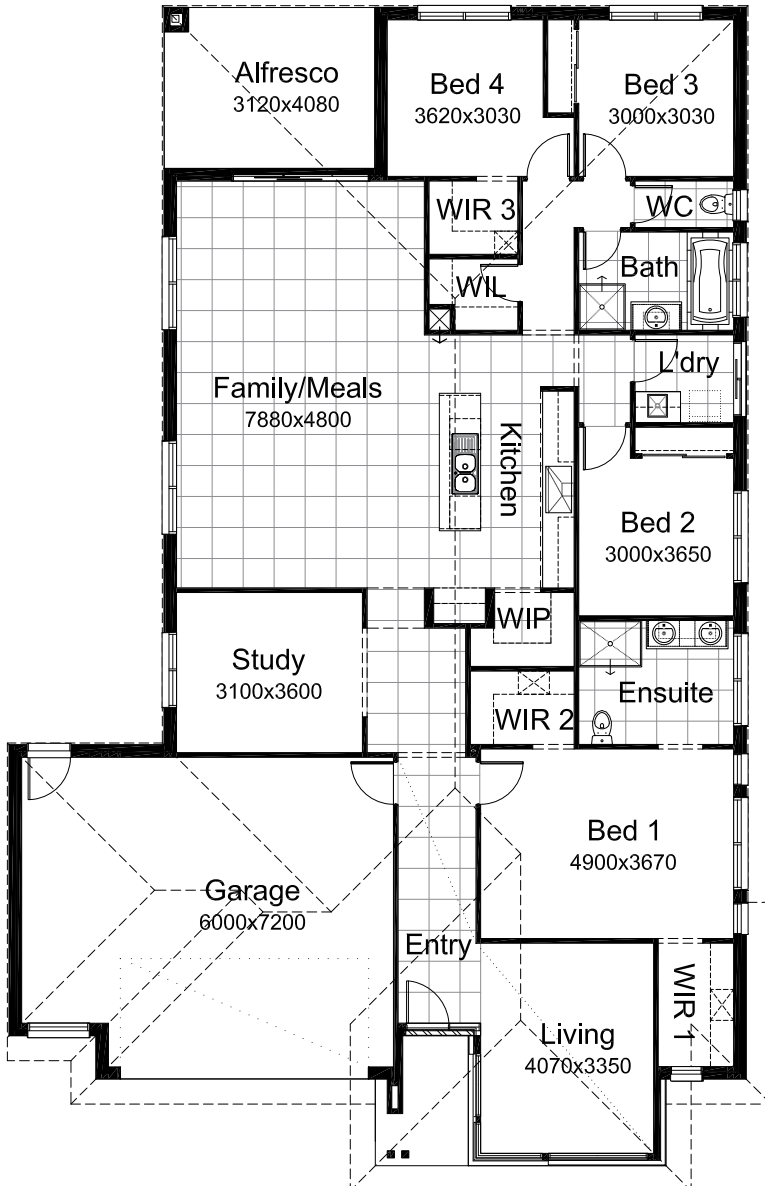
Lot 189
(9) Lakeside Drive
Lyndarum Estate
Wollert

Land size:

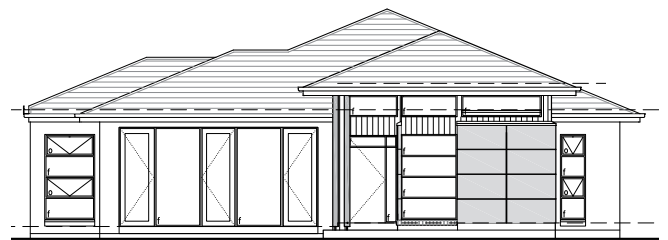
512m²



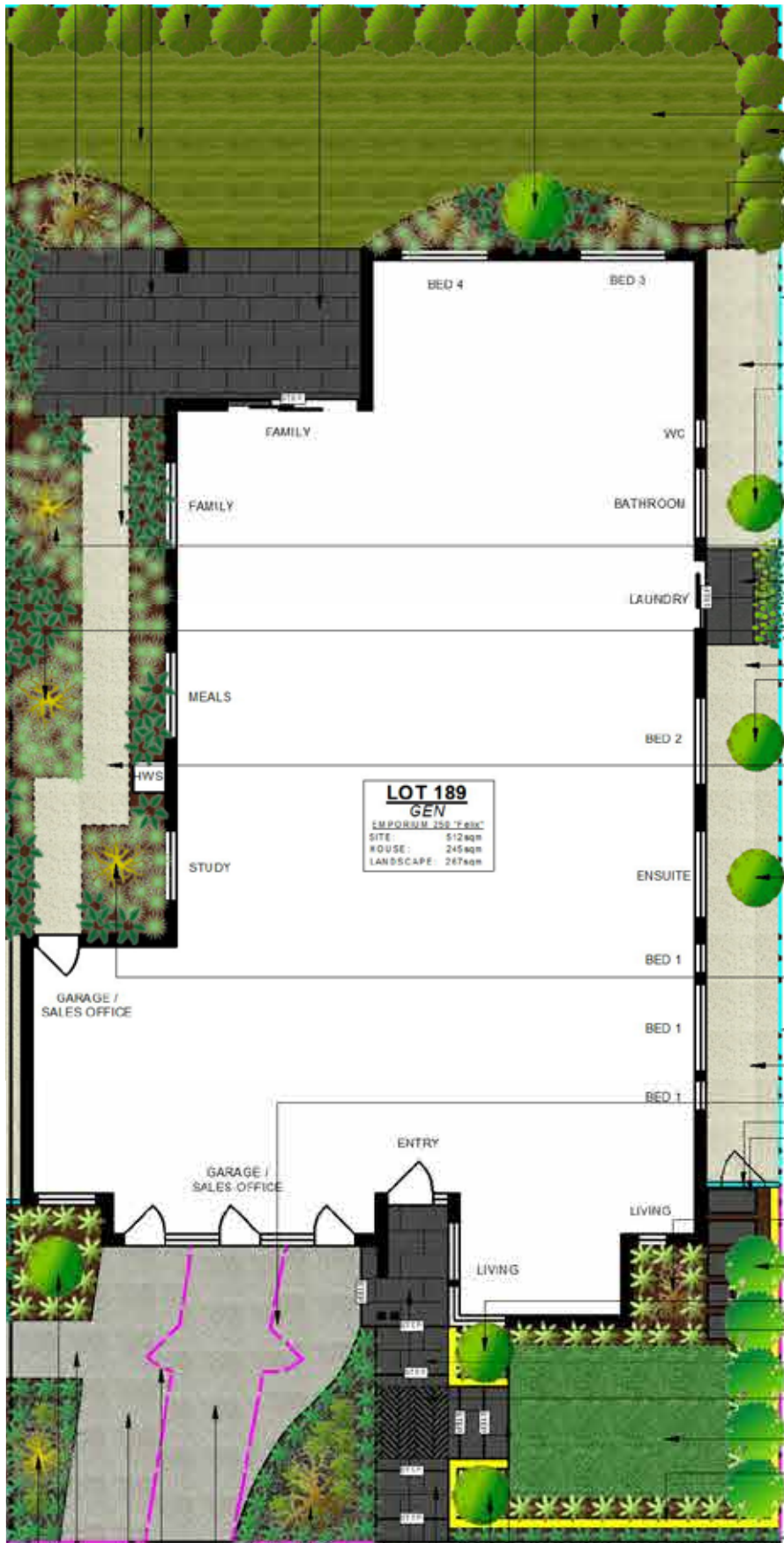
Photo is for illustrative purposes only and does not depict the home for sale. This image contains internal or external luxury upgrade items and furniture not included in the home price.



Residence	198.68sqm	21.39sq
Alfresco	12.73sqm	1.37sq
Porch	4.09sqm	0.44sq
Garage	45.81sqm	4.93sq
Total	261.31sqm	28.13sq



*7.0% return on investment for the life of the lease. Subject to developer design approval. Conditions apply. All photos and illustrations are representative only. All designs are the property of Burbank and must not be used, reproduced, copied or varied, wholly or in part without written permission from an authorised Burbank representative. Copyright Burbank Australia Pty Ltd. ABN 91 007 099 872. Builders Registration number CDB-U-52603.



External Finishes

Main Brick	Upgrade - PGH Bricks - Nuvo - Domino <i>Brick Colours Vary. Bricks are made from natural minerals. This is part of their enduring natural appeal, and may also be responsible for colour variation in the final blend. [Refer to general disclaimer]</i>
Main Brick Mortar Joints	Rolled - Off White <i>Please Note: Flush mortar joints are not available with tumbled bricks. Mortar colours will vary depending on the type of cement, sand and pigments used. Burbank strongly recommends that light coloured bricks have off white mortar. [Refer to general disclaimer]</i>
Concrete Roof Tiles	Bristle Roofing - Classic Shake Profile - Char Grey - (AMENDED 11/2/19 JM)
Evaporative Cooling Unit Colour	Bonaire Summer Breeze Contoured Unit - Charcoal
Rotary Roof Ventilator	Non-BAL Rating - CB Monument
Colorbond Gutter	Wallaby - (AMENDED 11/2/19 JM)
Colorbond Downpipes	Wallaby - (AMENDED 11/2/19 JM)
Colorbond Fascia	Wallaby - (AMENDED 11/2/19 JM)
Meter Box	Wallaby - (AMENDED 11/2/19 JM)
Garage Door	Sectional panel lift - Colorbond - Slimline - Wallaby - *to be installed after handover (AMENDED 11/2/19 JM)
Garage Infills	Brick - Refer to main brick - (AMENDED 11/2/19 JM)
Rear Garage Access Door	PAINTED - Taubmans - FOXDALE T15 32.4 (AMENDED 11/2/19 JM) <i>Client acknowledges that Burbank strongly recommends that North facing doors exposed to direct sunlight be finished with light reflective colours to reduce the drying effect of sunlight on the door surface, which may cause warping to occur. External doors painted in dark colours will be the clients responsibility.</i>

External Finishes

Front Entry Door	Blonde Oak - AWO 21 - stained - walnut timbre plus (Quantum) 2040 x 920 (AMENDED 23/1/18 JM) <i>Client acknowledges that Burbank strongly recommends that North facing doors exposed to direct sunlight be finished with light reflective colours to reduce the drying effect of sunlight on the door surface, which may cause warping to occur. External doors painted in dark colours will be the clients responsibility</i>
Front Entry Door Glazing	Clear Glazing
Front Door Sidelight Glazing	Gen - A&L - Clear Glazing
Single Glazed Aluminium Doors & Windows	Gen - A&L - Woodland Grey - (AMENDED 11/2/19 JM)
Timber Entry Frame	Stained (external&internal sides) - Walnut timbre plus - (quantum)
Timber Windows	Stained (external&internal sides) - Walnut timbre plus - (quantum)
Timber Window Winder Colour	Black
Window Infills	Brick - Refer to main brick
Alfresco Infills	Brick - Refer to main brick
Alfresco Beam	painted -Taubmans- FOXDALE T15 32.4 (AMENDED 11/2/19 JM)
Portico Lining	Surfmist
Eaves/Verandah Lining Colour	Surfmist
Wall Cladding	VERTICAL WESTERN RED CEDAR V JOINT CLADDING: stained - walnut timbre plus MATRIX CLADDING PAINTED FINISH: TAUBMANS - FOXDALE T15 32.4 (AMENDED 11/2/19 JM) <i>WeatherTex and Western Red Cedar cladding: Due to the nature of this product, a reasonable amount of fading over a short period of time will occur. Regular maintenance will be required at the customers expense. Maintenance of this type of cladding will not be the builders responsibility. Western red cedar cladding can only be used in BAL12.5 areas if installed greater than 400mm from ground floor level and/or greater than 400mm from flat roofs/balconies with less than 18 degree pitch. Western Red Cedar cladding does not comply in any other BAL rated areas. WeatherTex cladding can be used in any application for BAL rated areas up to BAL19 .</i>
External Entrance Door Furniture	Upgrade - Lockwood Entrance Locksets - Lockwood Nero Nexion (Element only) Lever - black NXV12/1L3MBK5PK
Internal Garage Door Furniture	lever: Element - Round Plate Black - VEL1/L3BLK deadbolt: LOCKWOOD NERO PARADIGM DOUBLE CYLINDER DEAD BOLT ROUND BLACK 005/B1MBK5PK *to be installed after handover

External Finishes

**Rear Garage Door
Furniture**

lever: Element - Round Plate Black - VEL1/L3BLK
deadbolt: LOCKWOOD NERO PARADIGM DOUBLE CYLINDER DEAD BOLT ROUND BLACK
005/B1MBK5PK

*to be installed after handover

Driveway Finishes

Exposed Aggregate - Natural Cement - Mix of 7mm pebble (50%) and 7mm Bluestone
pebble (50%)

Note: colour through concrete driveways will not be sealed.

Posts

Stained - Walnut timbre plus - (Quantum)

Other Items

ALFRESCO CEILING:
Western Red Cedar lining boards
profile: CV6C RAW FINISH. stained - walnut timbre plus (quantum)

Internal Finishes

Carpet	Burbank 6 - At Dusk
Carpet Underlay	CAT 3 - Blue
Wardrobe Colour Board Upgrade	BUILT IN ROBES: white melamine WIR 1, WIR 2, WIR 3 and WIL: formica - deep anthracite
Wardrobes Units	WIR 1 & WIR 2: fitout 4 - 600mm open shelf/drawer unit, shoe shelves and double hanging rails cabinetry handle: push open (no cabinetry handles) WIR 3: fitout 1 - 450mm wide open shelf unit (no drawers) *shelf to be at 2000mm FFL
Sliding Wardrobe Doors	Quick Sliding - Painted - flush panel 2340mm high - Winter Ice NH77 (bedrooms 2 & 3) (AMENDED 23/1/18 JM)
Wardrobe track & frame	Quickslide track - Satin Silver - (bedrooms 2 & 3 robes) (AMENDED 23/1/18 JM)
Internal Doors	Upgrade 2340mm - Moda PMOD1 - Gloss Enamel - Taubmans - Grey Moggy T15 27.5
Hinge and Strike Plates	Colour - Polished Chrome
Skirtings	Upgrade 92x12mm - Double Pencil Round - Gloss Enamel - Winter Ice NH77
Architraves	Upgrade 92x12mm - double pencil round - gloss enamel - Winter Ice NH77
Wall Paint	CAT 3 - Taubmans 3 coat Living Proof Silk - Taubmans - Mt Everest T15 28.2
Internal Side of Front Door	stained - walnut timbre plus (Quantum)
Ceiling Paint	CAT 3 - 2 coat Pure Performance - Taubmans - Winter Ice NH77
Cornices	Upgrade - Gyprock - Aria 75mm - Winter Ice NH77

Internal Finishes

Feature Walls	<p>PAINTED FEATURE WALLS: (ADDED 19/6/19 JM)</p> <p>BED 1 inc WIR 1 & 2: ELEV: ALL WALLS COLOUR: WISTFUL WILLOW T15 39.5</p> <p>FAMILY: ELEV: A COLOUR: BLACK SEA T15 18.7</p> <p>BED 4 inc WIR 3: COLOUR: BEIGE ASH T15 39.4</p> <p>WALLPAPER FEATURE WALLS: (ADDED 19/6/19 JM)</p> <p>LIVING: ELEV: D SUPPLIER: ZEPEL BOOK/PAPER: CASAMANCE - CARIOCA RIO MADERA: 7425 08 14 PG: 16</p> <p>STUDY: ELEV: A, B & C (3 WALLS ONLY) SUPPLIER: ZEPEL BOOK/PAPER: CASAMANCE - CARIOCA RIO MADERA: 7425 08 14 PG: 16</p> <p>FAMILY/MEALS: ELEV: B SUPPLIER: RADFORD BOOK/PAPER: WHITE & LIGHT - ZACK L 7161 PG:13</p> <p>BED 2: ELEV:C SUPPLIER: RADFORD BOOK/PAPER: GRAPHIC WORLD - ANGLE 8821 PG:31</p> <p>BED 3: ELEV:D SUPPLIER: ASCRAFT BOOK/PAPER: KROMA BACK TO NATURE - OSAKA BETON SQU 402 PG:31</p>
Internal door handles	Upgrade - Lockwood Velocity 63mm Passage Set - Element - Round Plate Black - VEL1/L3BLK
Privacy Locks	Upgrade - Lockwood Velocity 63mm Privacy Set - Element - Round Plate Black - VEL2/L3BLK - INSTALL TO W.C ONLY (AMENDED 23/1/18 JM)
Flush Pull Handles (Internal Doors)	Upgrade - Lockwood Flush Pull Handle - Square Black FP2-150PC - (AMENDED 23/1/18 JM) INSTALL TO ROBE DOORS
Internal Door Dummy Handles	Upgrade - Lockwood Velocity 63mm Dummy Handle - Element - Round Plate Black - VEL3/L3BLK

Internal Finishes

Other Items

SOFT CLOSE:

hafele alto - to all drawers throughout
Hafele Salice - to all cupboard doors throughout

LIGHTING:

INTERNAL: white round LED downlights throughout
EXTERNAL: black round spectrum downlights

KITCHEN:

3 x Lumena Surface Mounted Downlight, black
location: central over island

ENSUITE:

2 x Lumena Surface Mounted Downlight, black
location: central over each basin

LIVING: (AMENDED 16/4/19 JM)

3 X RUBIX PENDANT, MATT BLACK WITH ACRYLIC DIFFUSER, CLEAR CORD
size: 400x400
location: corner of elev. B & C walls - STAGGERED DROPS (AMENDED 19/6/19 JM)

STUDY: (AMENDED 16/4/19 JM)

2 x Large - Viva pendant, black. black cord.
size: 60 x 600
location: corner elev. A & B walls.

WC & BATHROOM: (AMENDED 28.05.19 CE)

NERISSA SURFACE MOUNTED DOWNLIGHTS COLOUR: WHITE

Tiles

Kitchen Wall Tiles Option 1	NANDA BRICK - BLACK KNIGHT 60x200 (VOLFA0010) - horizontal stack-bond grout: ardex #211 slate grey *tiles to extend behind rangehood
Bathroom Wall Tiles Option 1	BATH HOB (FACE & TOP): downtown carbon matt - 300x600mm - STOFK0406 - horizontal stack-bond grout: ardex #211 slate grey
Bathroom Wall Tiles Option 2	BATH SPLASHBACK AND SHOWER WALLS: Downtown silver matt - 300x600mm - STOFK0408 - horizontal stack-bond grout: ardex #273 Magellan grey
Ensuite Wall Tiles Option 1	ELEVATION A WALL, FLOOR TO CEILING: NANDA BRICK - BLACK KNIGHT 60x200 (VOLFA0010) - horizontal stack-bond grout: ardex #211 slate grey
Ensuite Wall Tiles Option 2	ELEV. B, C, & D, FLOOR TO CEILING: downtown silver matt - 300x600mm - STOFK0408 - horizontal stack-bond grout: ardex #273 Magellan grey
Laundry Wall Tiles Option 1	NANDA BRICK - BLACK KNIGHT 60x200 (VOLFA0010) - horizontal stack-bond grout: ardex #211 slate grey *tiled splashback to extend behind washing machine space
Bath Trim	TRIM TO BATH HOB: ANGQE312BB
Floor Tiles Option 1	Downtown Carbon Matt - 600x600mm - STOFPO410 grout: ardex #211 slate grey (includes tiled shower bases)

Bathroom

Benchtop	Cat 6 Reconstituted Stone - silestone - 12mm square edge - snowy ibiza
Base Cabinets	LAMINEX: JARRAH LEGNO - VERTICAL GRAIN FINISH:CHALK (AMENDED 16/4/19/JM) *SOFT CLOSING INCLUDING SHADOWLINE (AMENDED 23/1/18 JM)
Vanity Units	982mm - Type 2 - VBI.09-2 - 2no doors, 1no. basin & mixer with shadow line - *floating vanity unit
Cabinetry Handles	Cat 4 - Hafele - 110.34.355 - zinc alloy - black matt - Horizontal to all doors and drawers - (AMENDED 16/4/19 JM) (AMENDED 17.04.19 AH)
Basin	Upgrade - NIMOS ceramic above counter basin black SBC-027K
Basin Pop Up Waste Upgrade	Black 800-8900-10
Basin Tapware	Upgrade - Phoenix - Rush Vessel Mixer Black RU790
Bath/Spa	Upgrade - Decina Turin bath 1665 - BATH000010
Bath Taps & Mixers	Upgrade - Rush wall taps black - RU060 MB
Bath Outlet	Upgrade - Rush bath spout black - RU777 MB
Shower Head On Arm/Rail	Upgrade - Vivid shower on rail black - V685 MB
Shower Taps and Mixers	Upgrade - Rush wall taps black - RU060 MB
Shower Base	Upgrade - Tiled base with chrome waste - 900x900mm
Showerscreen Frame	Cat 2 - premium eureka - matt black trim
Toilet	Upgrade - Siema - Modia wall faced toilet suite STO-305-00

Ensuite

Benchtop	Cat 6 Reconstituted Stone - silestone - 12mm square edge - snowy ibiza
Base Cabinets	LAMINEX: JARRAH LEGNO - VERTICAL GRAIN FINISH:CHALK (AMENDED 16/4/19/JM) *SOFT CLOSING INCLUDING SHADOWLINE (AMENDED 23/1/18 JM)
Drawer Unit	LAMINEX: JARRAH LEGNO - VERTICAL GRAIN FINISH:CHALK (AMENDED 16/4/19/JM) *SOFT CLOSING
Vanity Units	1582mm - Type 2 - VBID.15-2D - 2no. Doors, 1no. 3 drawer unit, 2no. Basins & mixers with shadow line - *floating vanity unit
Cabinetry Handles	Cat 4 - Hafele - 110.34.355 - zinc alloy - black matt - Horizontal to all doors and drawers - (AMENDED 16/4/19 JM) (AMENDED 17.04.19 AH)
Basin	Upgrade - NIMOS ceramic above counter basin black SBC-027K - 2No.
Basin Pop Up Waste Upgrade	Black 800-8900-10 - 2No.
Basin Tapware	Upgrade - Phoenix - Rush Vessel Mixer Black RU790 - 2No.
Shower Head ceiling mounted	Upgrade - Vivid shower rose 230mm and Vivid round ceiling dropper 450mm black - V527 MB / V545 MB
Shower Taps and Mixers	Upgrade - Rush wall taps black - RU060 MB
Shower Base	Upgrade - Tiled base with chrome waste - 1200x900mm
Showerscreen Frame	Cat 2 - premium eureka - matt black trim
Toilet	Upgrade - Siema - Modia wall faced toilet suite STO-305-00

Laundry

Laundry Benchtops	Cat 6 Reconstituted Stone - silestone - 12mm square edge - snowy ibiza
Laundry Base Cabinets	LAMINEX: JARRAH LEGNO - VERTICAL GRAIN FINISH:CHALK (AMENDED 16/4/19/ JM) *SOFT CLOSING INCLUDING SHADOWLINE (AMENDED 23/1/18 JM)
Kickboard	LAMINEX: JARRAH LEGNO - VERTICAL GRAIN FINISH:CHALK (AMENDED 16/4/19/ JM)
Overhead Cupboards	LAMINEX: JARRAH LEGNO - VERTICAL GRAIN FINISH:CHALK (AMENDED 16/4/19/ JM) *SOFT CLOSING
Cabinetry Handles	OVERHEAD CUPBOARDS: 16mm finger pull overhang (no cabinetry handles) BASE CABINERY: TYPE: 110.34.355 COLOUR: MATT BLACK PLACEMENT: HORIZONTAL (AMENDED 16/4/19 JM) (AMENDED 17.04.19 AH) *SOFT CLOSING (AMENDED 16/4/19 JM)
Laundry Trough	Upgrade - Franke - Aton single bowl undermount sink ANX100-34
Laundry Tapware	Upgrade - Phoenix - Rush sink mixer black RU730MB
Washing Machine Stops	Gen - 20mm washing machine stops

Kitchen

Benchtops	<p>REAR BENCHTOP: cat 6 - silestone - snowy Ibiza - 12mm square edge ISLAND BENCHTOP: cat 6 - silestone - snowy Ibiza - 40mm square edge (includes 2no. wrap down ends) <i>DISCLAIMER: Based on slab size and configuration of kitchen, joins may be required in the stone bench top.</i></p>
Shadow Line	<p>REAR BENCH CABINETRY: LAMINEX: JARRAH LEGNO - HORIZONTAL GRAIN *BOOOKMATCH FINISH:CHALK (AMENDED 16/4/19/ JM)</p> <p>ISLAND BENCH CABINETRY: Laminex absolute matt - black</p>
Base Cabinets	<p>REAR BENCH CABINETRY: LAMINEX: JARRAH LEGNO - HORIZONTAL GRAIN *BOOK MATCH FINISH:CHALK (AMENDED 16/4/19/ JM) *SOFT CLOSING</p> <p>ISLAND BENCH CABINETRY: Laminex absolute matt - black</p>
Kickboard	<p>REAR BENCH CABINETRY: LAMINEX: JARRAH LEGNO - HORIZONTAL GRAIN *BOOK MATCH FINISH:CHALK (AMENDED 16/4/19/ JM)</p> <p>ISLAND BENCH CABINETRY: Laminex absolute matt - black</p>
Overhead Cupboards	<p>LAMINEX: JARRAH LEGNO - HORIZONTAL GRAIN *BOOK MATCH FINISH:CHALK (AMENDED 16/4/19/ JM)</p> <p>**SOFT CLOSING (AMENDED 16/4/19 JM)</p>
Open Shelves	<p>ABOVE FRIDGE SPACE: LAMINEX: JARRAH LEGNO - HORIZONTAL GRAIN * BOOKMATCH FINISH:CHALK (AMENDED 16/4/19/ JM)</p>
Bar Back	<p>Laminex absolute matt - black</p> <p>*3 panels</p>
Cabinetry Handles	<p>OVERHEAD CUPBOARDS: 16mm finger pull overhang (no cabinetry handles) BASE CABINETRY: TYPE: 110.34.355 COLOUR: MATT BLACK HORIZONTAL PLACEMENT (AMENDED 16/4/19 JM) (AMENDED 17.04.19 AH)</p> <p>*SOFT CLOSE TO BASE CABINETRY (AMENDED 16/4/19 JM)</p>
Underbench Oven	Upgrade - Smeg - SFRA9300XR - Smeg 900mm commercial oven
Cooktop	Upgrade Smeg - CIR93AXS3 - 900mm gas cooktop
Rangehood	Upgrade Smeg - SHW181X90 - 900mm canopy wall mount
Dishwasher	Upgrade - Smeg - DWAI6214X- semi integrated
Microwave	Upgrade - Smeg - 600mm Microwave including trim kit - SA34MX S/S
Sink	Upgrade - Franke - Aton double bowl undermount sink ANX 120-34
Mixer Tap	Upgrade - Phoenix - black - Rush sink mixer black RU730MB
Other Items	<p>WIP Shelving: Laminex absolute matt - black</p>

Display Office Ext

Timber Windows	Quantum Walnut - INSIDE & OUT
Timber Entry Frame	Quantum Walnut - INSIDE & OUT
Rear Garage Door Furniture	AS PER EXTERNAL COLOURS
External Entrance Door Furniture	WHITCO ENTRANCE BEVEL LEVER CP CHROME PLATE W7300085PK with WHITCO DOUBLE CYLANDER DEADBOLT POLISJED STAINLESS STEEL W7204275PK

Display Office Int

Internal Side of Front Door	stained - Quantum Walnut
Ceiling	UPGRADE: TAUBMANS - WINTER ICE NH77
Cornices	UPGRADE: SQUARE SET
Walls	UPGRADE: TAUBMANS - MALAMUTE T15 42.3
Feature Walls	TIMBER FEATURE WALL - ELEVATION D TYPE: INTERNAL LINING BOARD PSN26 133x12 TASMANIAN OAK - RAW FINISH STAIN: QUANTUM - TIMBER PLUS INTERIOR - CLEAR - LOW SHEEN DIRECTION: VERTICAL PAINTED FEATURE WALL: ELEV: A REAR WALL ONLY COLOUR: TAUBMANS 'WOLF CRY' T15 29.4
Skirtings	110mm Square profile Paint: Winter Ice NH77
Architraves	CAT 3 - 67mm x 12mm - Corinthian - PMBVA - Single Bevelled - PAINT: WINTER ICE NH77
Internal door furniture	LOCKWOOD - SYMMERTRY CAVITY SLIDER ENTRANCE SET - SATIN CHROME - 7444SP5PK
Carpet	FELTX - CREVELLI 4m COLOUR: 9/PEPPERED
Carpet Underlay	UPGRADE: EXA Lay
Benchtops	KITCHENETTE SINK BENCH ONLY: LAMINEX COLOUR: Clay Textile FINISH: Natural EDGE:SQUARE
Tiles	KITCHENETTE: TILE: MATT WHITE 100X300 GROUT: 200 WHITE PLACEMENT: LAY 300 LENGTH HORIZONTALLY STACKED
Base Cabinets	KITCHENETTE: LOCATION: ELEV:E OPEN SHELVES ABOVE PHOTOCOPIER LAMINATE: LAMINEX - BATILLION (Amended 28/02/19 CE) FINISH: NATURAL LOCATION: ELEV:F - 2 x BASE CABINET DOORS & 2 OVERHEAD DOORS LAMINATE: LAMINEX - BATILLION (Amended 28/02/19 CE) FINISH: NATURAL LOCATION: ELEV: E & F OPENSHELVES/PANTRY DOORS INCLUDING BENCH ABOVE FRIDGE SPACE & KICKERS LAMINATE: WHITE FINISH: NATURAL
Cabinetry Handles	NO HANDLES REQUIRED - PUSH OPENING TO BE INSTALLED 2 x HANDLES INSTALLED TO LOCKABLE PANTRY DOORS ONLY - TYPE: 112.90.041 - HORIZONTAL PLACEMENT
Sink	FRANKE: ONDALINE SINGLE BOWL SINK - OLX611-86
Mixer Tap	PHOENIX - IVY YS730 CHROME

Display Office Int

Other Items

CONVERSATION BENCH WITH DOORS:
BENCHTOP WITH WATERFALL ENDS: LAMINATE: LAMINEX - WHITE FINISH: NATURAL
DOORS & REAR PANEL: LAMINATE: LAMINEX - WHITE FINISH: NATURAL
*NOTE: NO HANDLES REQUIRED - PUSH BUTTON OPENING

FREE STANDING PARTITION FOR DESKS:
LAMINATE: LAMINEX COLOUR: CLAY TEXTILE FINISH: NATURAL

GREEN WALL FRAME & BACKING BOARD
LAMINATE: LAMINEX COLOUR: BLACK FINISH: NATURAL

PENDANTS: TYPE: 2 x COLLINS COLOUR: NATURAL TIMBER
LOCATION: REAR RIGHT CORNER - STAGGARED HEIGHTS
DIMENSIONS: FRONT PENDANT - 450mm OFF ELEV A & 300mm OFF ELEV B, DROPPED
615mm FROM CEILING
REAR PENDANT - 250mm OFF ELEV A & 300mm OFF ELEV B, DROPPED 815mm FROM
CEILING

FLOATING SHELVES: (Marketing Material)
LAMINATE: LAMINEX COLOUR: SUBLIME TEAK FINISH: NATURAL
